

Customer specific linear guide from S/M/G®

for
 Contact person: _____
 Customer: _____
 Phone: _____
 E-Mail: _____
 Quantity : ___/___/___/___/___ piece
 dimensions Typ _____
 measure A: _____ mm
 measure B: _____ mm
 measure C: _____ mm
 measure D: _____ mm
 measure E: _____ mm
 measure F: _____ mm

Conditions at the depository

Speed: _____ r.p.m
 Capacity radial stat: _____ N
 Capacity radial dyn: _____ N
 Speed: _____ m/s

Operation temperature: _____ °C

Conductibility or insulation respectively: yes Atex no

weatherability : yes no

food conformity : yes no

Radiation exposure/resistance : _____ kGy

Chemical additives : _____

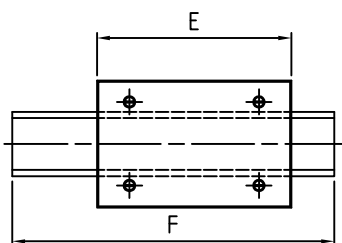
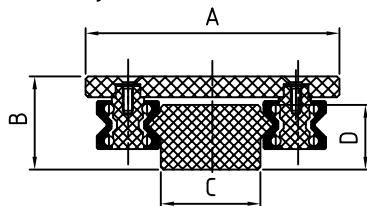
material selection

rings: _____

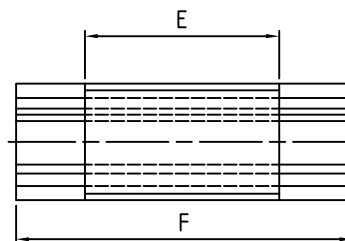
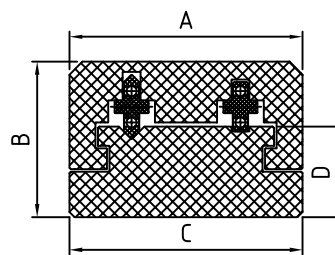
cage: _____

balls: _____

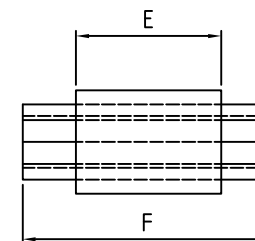
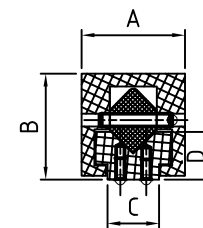
Typ 1
 ball bearing mounted,
 adjustable, overhead



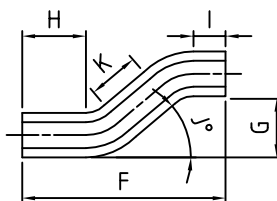
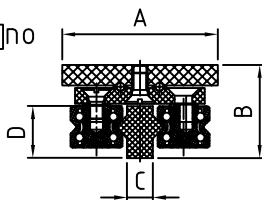
Typ 2
 ball bearing mounted



Typ 3
 rolling convey storage



Typ 1 K
 ball bearing mounted,
 adjustable, overhead
 suitable for curve drives



Schmeing GmbH & Co. KG
 46348 Raesfeld-Tel.02865/9090