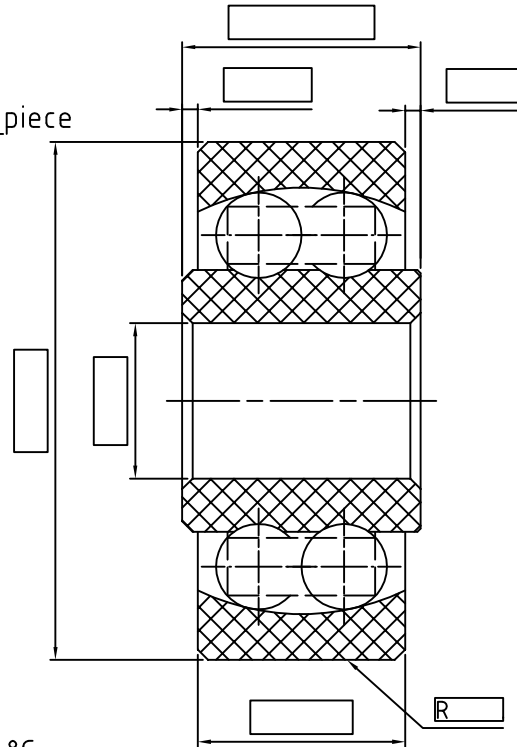


# Customer specific spherical roller bearing from **SIMG**®

for  
 Contact person: \_\_\_\_\_  
 Customer: \_\_\_\_\_  
 Phone: \_\_\_\_\_  
 E-Mail: \_\_\_\_\_  
 Quantity : \_\_\_/\_\_\_/\_\_\_/\_\_\_/\_\_\_ piece



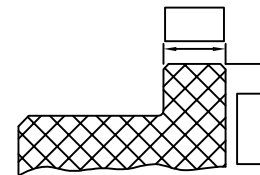
Conditions at the depository  
 Speed: \_\_\_\_\_ r.p.m  
 Capacity radial static: \_\_\_\_\_ N  
 Capacity radial dyn: \_\_\_\_\_ N  
 Operation temperature: \_\_\_\_\_ °C  
 Conductibility or insulation respectively: yes Atex no  
 weatherability : yes no  
 food conformity : yes no  
 Radiation exposure/resistance : \_\_\_\_\_ kGy  
 Chemical additives : \_\_\_\_\_

## material selection

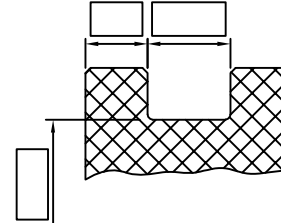
rings: \_\_\_\_\_  
 cage: \_\_\_\_\_  
 balls: \_\_\_\_\_

## possible options

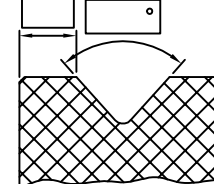
outer ring  
 ball bearing with flange



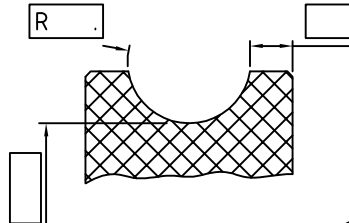
ball bearing with puncture



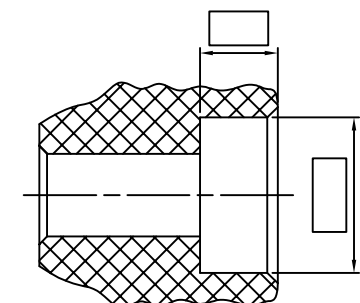
ball bearing with V-puncture



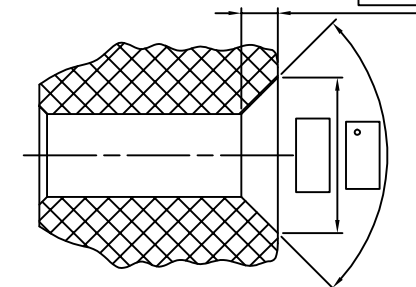
ball bearing with radii puncture



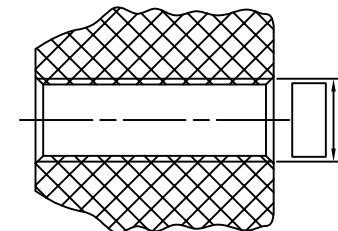
inner ring  
 ball bearing with counterbore



ball bearing with cone reduction



ball bearing with thread



Schmeing GmbH & Co. KG  
 46348 Raesfeld-Tel.02865/9090